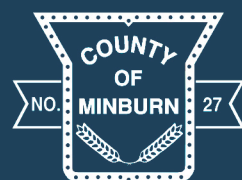


The East Industrial Park Area Structure Plan (ASP) study area is located immediately east of the Village of Mannville in the County of Minburn, Alberta, Canada comprising approximately 120 ha of land. The ASP location is also adjacent to Yellowhead Highway 16.

The intent of the ASP is to promote the area for non-residential development to investors by undertaking the preliminary planning and analysis required for future development. The ASP provides valuable information for investors including a preliminary biophysical assessment, geotechnical investigation, transportation overview, stormwater management plans and servicing review in its appendices.

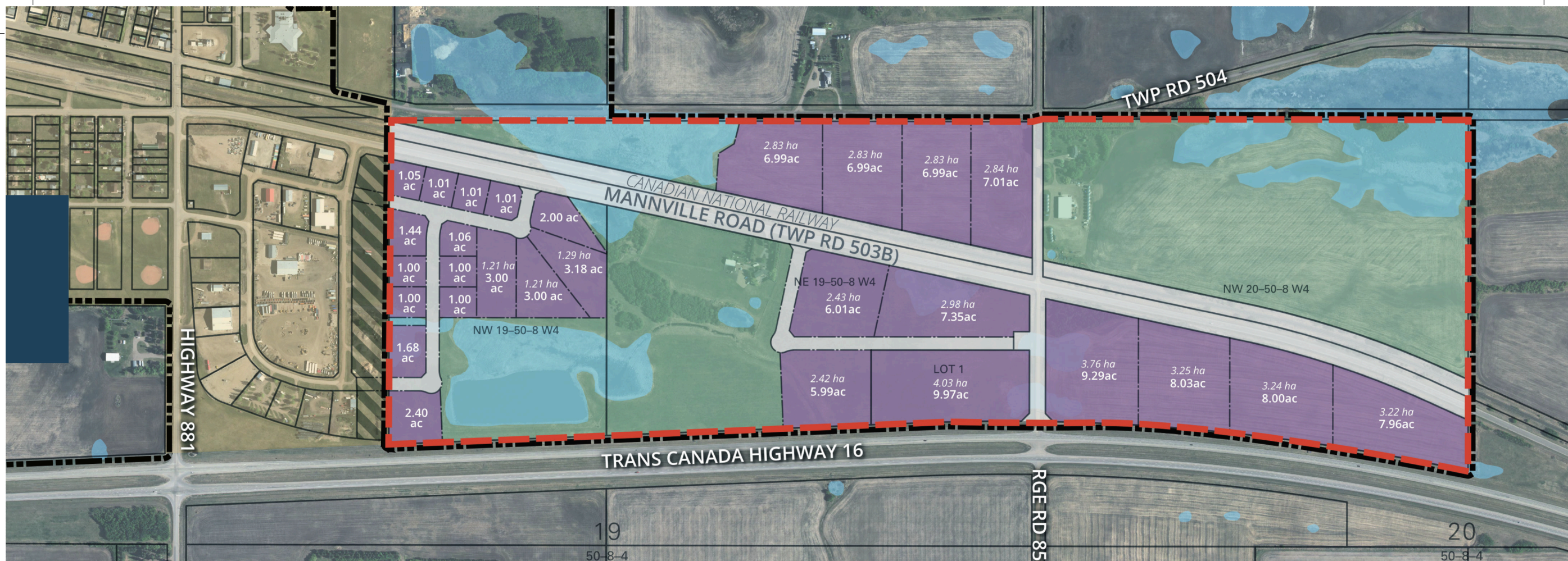


For more information on land availability and the development process in the County of Minburn, please visit:

www.minburncounty.ab.ca
or 780 632 2082

**RURAL INDUSTRIAL
DEVELOPMENT AREA**

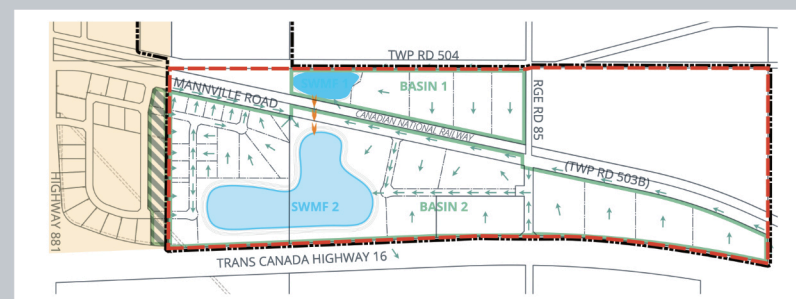
www.minburncounty.ab.ca



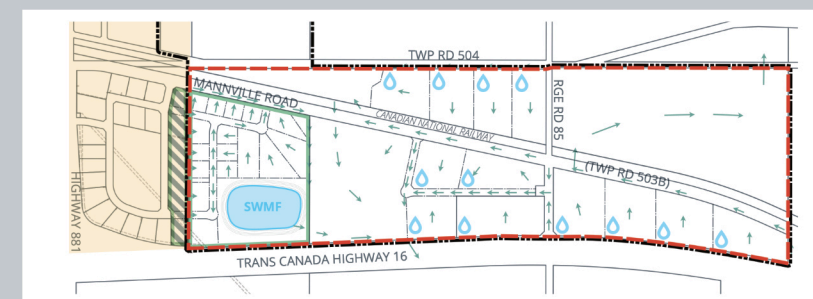
The East Industrial Park Area Structure Plan (ASP) study area is located immediately east of the Village of Mannville in the County of Minburn, Alberta, Canada comprising approximately 120 ha of land. The ASP location is also adjacent to Yellowhead Highway 16.

The intent of the ASP is to promote the area for non-residential development to investors by undertaking the preliminary planning and analysis required for future development. The ASP provides valuable information for investors including a

Stormwater – Scenario 1



Stormwater – Scenario 2



MAP LEGEND

- | | | | |
|---------------------|-----------------------|----------------------------|---|
| --- IDP Boundary | Village of Mannville | Storm Pond/Wetland | Proposed Storm Sewer |
| - - - Plan Boundary | Agricultural Land Use | Catchment Boundary | Private On-Site Storm Water Management Required |
| Shadow Plan Area | Industrial Land Use | General Drainage Direction | |