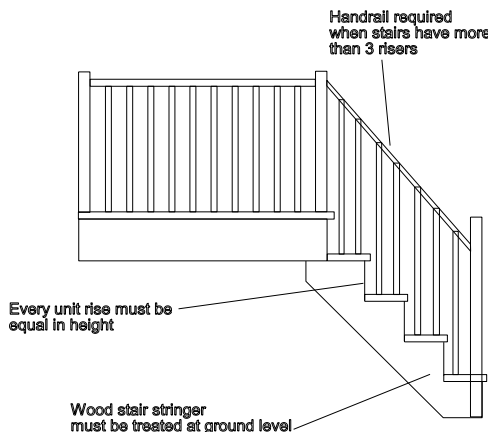
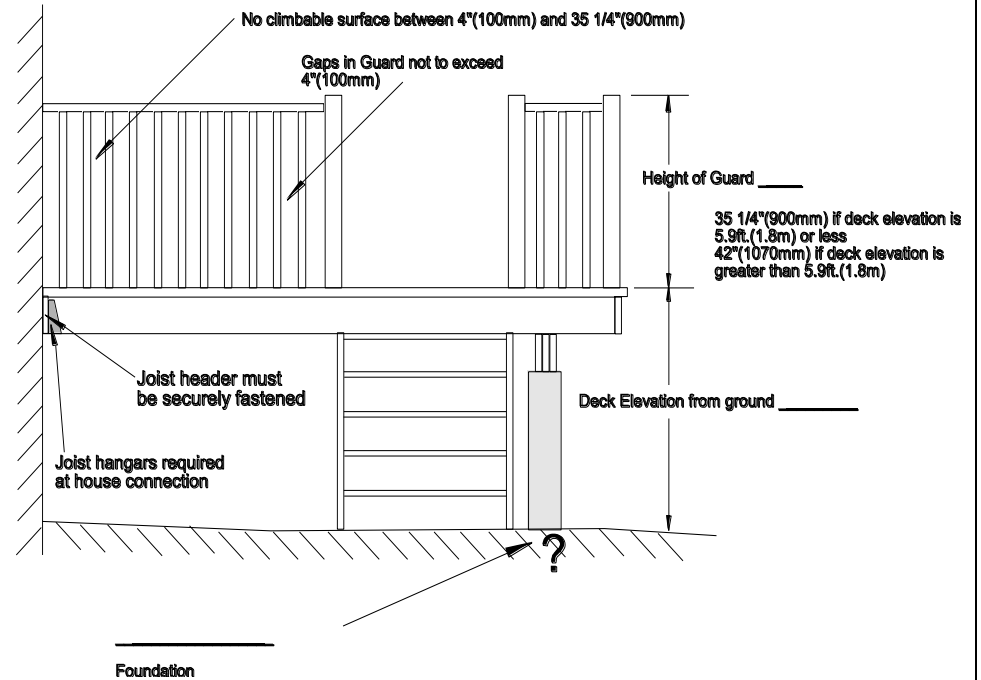
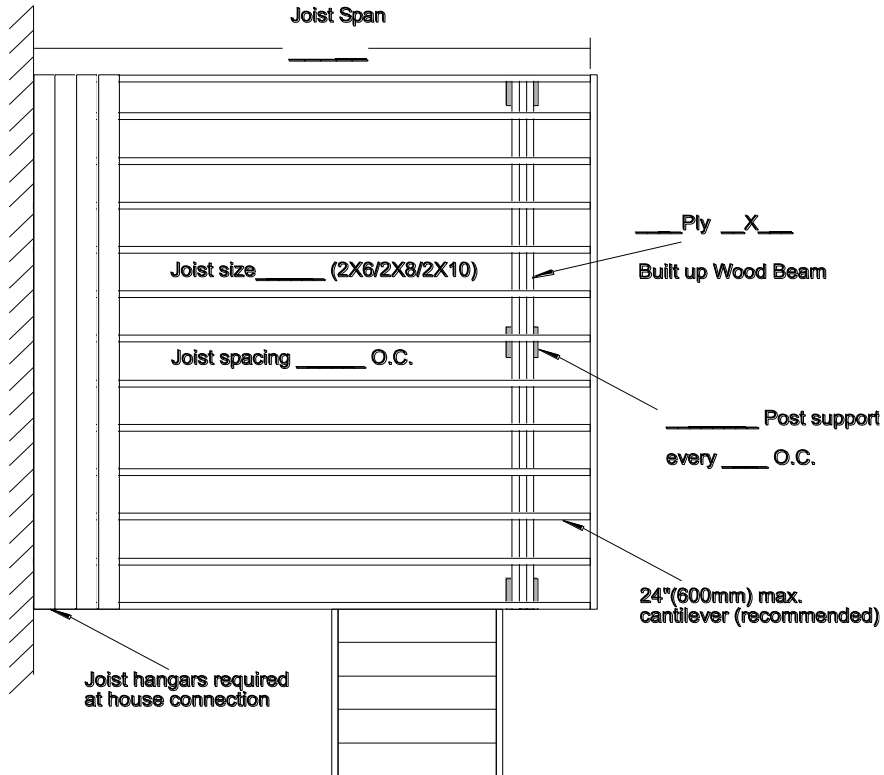
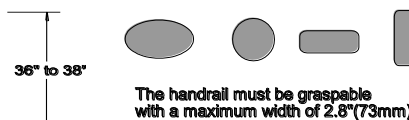


TYPICAL DECK CONSTRUCTION.

(Deck attached to house. No roof cover)



The vertical handrail height must be 35 1/4" (900mm) minimum to 38" (965mm) maximum measured from the forward edge of the stair nosing.



Typical Framing Materials, Spacing & Spans

Joists #1&2 S.P.F.	16" O.C.	24" O.C.
2" X 6"	9' - 4"	8' - 2"
2" X 8"	12' - 4"	10' - 9"
2" X 10"	15' - 8"	13' - 9"
Post Spacing	Joist Span 1&2 S.P.F.	Beam 1&2 S.P.F.
6' O.C.	8'	2 ply 2"X8"
	10'	2 ply 2"X8"
	12'	2 ply 2"X8"
8' O.C.	8'	2 ply 2"X10"
	10'	2 ply 2"X10"
	12'	2 ply 2"X10"