



## **AGENDA**

Committee of the Whole  
January 10, 2024  
10:00 a.m.

---

**1. CALL TO ORDER**

**2. CHANGES TO AGENDA & ADOPTION OF AGENDA**

**3. CONFIRMATION OF MINUTES**

**4. DELEGATIONS**

**5. REPORTS FOR DISCUSSION**

- 5.1 Small Community Opportunity Program - Economic Development Communications Project

**Administration Presenter:**

Davin Gegolick, Director of Planning and Community Services

**6. CORRESPONDENCE**

- 6.1 Town of Vegreville re Family Day Breakfast

**7. COUNCILLOR REQUESTS (INFORMATION / PROGRAM REQUESTS)**

- 7.1 Division Reports  
7.2 Councillor Request Report  
(*To add or remove items from the Councillor Request Report*)

**8. CLOSED SESSION**

- 8.1 "Draft" Council Procedural Bylaw – Part 1 of 2  
*FOIP, Section 24, advice from officials*  
8.2 "Draft" Cemetery Bylaw  
*FOIP, Section 24, advice from officials*  
8.3 MD of Minburn Foundation  
*FOIP, Section 16, disclosure harmful to business interest of a third party*

**9. OPEN SESSION**

**10. MOTIONS ARISING OUT OF THE CLOSED SESSION**

**11. ADJOURNMENT**



## Committee of the Whole Meeting Minutes

December 13, 2023

Members Present:

Reeve Roger Konieczny, Division 3  
Deputy Reeve Tara Kuzio, Division 5  
Councillor Joey Nafziger, Division 1  
Councillor Eric Anderson, Division 2  
Councillor Cliff Wowdzia, Division 4  
Councillor Carl Ogrodnick, Division 6  
Councillor Kevin Bentley, Division 7

Administration Present:

Pat Podoborzny, Chief Administrative Officer  
Jason Warawa, Director of Corporate Services  
Norm De Wet, Director of Operations  
Mike Fundytus, Director of Protective Services  
Davin Gegolick, Director of Planning and Community Services  
Trudy Shukalak, Legislative Services Coordinator

---

### 1. CALL TO ORDER

Reeve Konieczny called the meeting to order at 10:00 a.m.

### 2. CHANGES TO AGENDA & ADOPTION OF AGENDA

#### **2023-W077**

**Moved by:** Councillor Wowdzia

THAT the December 13, 2023, Committee of the Whole meeting agenda be adopted as presented.

**Carried**

### 3. CONFIRMATION OF MINUTES

#### **2023-W078**

**Moved by:** Deputy Reeve Kuzio

THAT the November 15, 2023, Committee of the Whole meeting minutes be adopted as presented.

**Carried**

## **4. DELEGATIONS**

## **5. REPORTS FOR DISCUSSION**

### **5.1 Leasing of Lands in Lavoy**

A request has been received from a Hamlet of Lavoy resident to lease one or two County owned vacant lots located behind her property for the purpose of planting a garden.

Block 8 was developed by the County with the intent of being sold for residential use, however, due to drainage issues on this land, the lots have not been sold.

At the November 15, 2023, Committee of the Whole meeting, Council requested Administration to research soil composition of Block 8 lots to determine soil suitability for garden plots.

#### **Administration Presenter:**

Director of Planning and Community Services Davin Gegolick

The Committee of the Whole is requesting Administration send a letter to the landowner advising that the County is in support of a community garden with the recommendation that a non-profit group administer the project.

### **5.2 Voyent Alert**

The Committee of the Whole requested that Administration provide more information regarding the Voyent Alert System which is an app-based mass notification service designed to rapidly communicate to residents information such as road closures, construction notices, emergencies and other safety hazards.

#### **Administration Presenter:**

Director of Protective Services Mike Fundytus

The Committee of the Whole is requesting Administration conduct a resident review and communication strategy in 2024 before making a decision to enroll in the Voyent Alert System.

### **5.3 Master Rates Bylaw Amendment**

The Committee of the Whole was presented with a number of proposed changes to the County's Master Rates Bylaw schedule of fees, rates and charges.

**Administration Presenter:**

Director of Corporate Services Operations Jason Warawa

**2023-W079**

**Moved by:** Councillor Wowdzia

THAT Administration prepare an RFD for the December 18, 2023, County Council meeting recommending the approval of an amending Master Rates Bylaw that reflects the changes in the Schedule of fees, rates and charges as presented.

**Carried**

**ACTION: Create RFD**

5.4 Vermilion Airport

The Town of Vermilion is seeking municipal partnerships in its proposed regionalization of the Vermilion Airport and is asking surrounding municipalities to meet with them to discuss this direction of the airport.

**Administration Presenter:**

Chief Administrative Officer Pat Podoborzny

5.5 Emerging Trends in Municipal Law

Brownlee LLP is inviting Council to their annual Emerging Trends in Municipal Law Seminar aimed at delivering expert insight into the field of municipal law. Emerging Trends dates are February 8, 2024, in Calgary and February 15, 2024, in Edmonton. Seminar may be attended in-person or virtually.

**6. COUNCILLOR REQUESTS (INFORMATION/PROGRAM REQUESTS)**

6.1 Divisional Reports

Presented by Reeve and Council

6.2 Councillor Request Report

*Reeve Konieczny recessed the meeting at 10:42 a.m.*

*Reeve Konieczny reconvened the meeting at 10:46 a.m.*

**7. CLOSED SESSION**

**2023-W080**

**Moved by:** Councillor Nafziger

THAT the Committee of the Whole meet in private to discuss matters protected from disclosure under the *Freedom of Information and Protection of Privacy Act (FOIP)*, sections 16, 23, 24 and 27 at 10:47 a.m.



## 7.1 Gravel Haul Program 2024

*FOIP Section 16, disclosure harmful to business interest of a third party*

Name	Reason/Purpose
Pat Podoborozny	Strategic Leader of the Organization
Jason Warawa	Strategic Leader of the Organization
Norm De Wet	Presenter
Mike Fundytus	Strategic Leader of the Organization
Davin Gegolick	Strategic Leader of the Organization

## 7.2 Interim Budget 2024

*FOIP Section 16, disclosure harmful to business interest of a third party, Section 23, local body confidence, Section 24, advice from officials, and Section 27, privileged information.*

Name	Reason/Purpose
Pat Podoborozny	Strategic Leader of the Organization
Jason Warawa	Presenter
Norm De Wet	Strategic Leader of the Organization
Mike Fundytus	Strategic Leader of the Organization
Davin Gegolick	Strategic Leader of the Organization

*Jason Warawa, Norm De Wet, Mike Fundytus and Davin Gegolick left the closed session at 11:30 a.m.*

*The meeting reverted to closed session at 11:34 a.m.*

*Deputy Reeve Kuzio left the closed session at 11:54 a.m.*

**8. OPEN SESSION**

**2023-W081**

**Moved by:** Councillor Nafziger

THAT the Committee of the Whole meeting revert to open session at 11:56 a.m.

Carried

**9. MOTIONS ARISING OUT OF CLOSED SESSION**

## **10. ADJOURNMENT**

Reeve Konieczny adjourned the meeting at 11:57 a.m.

---

Reeve

---

Chief Administrative Officer



## COMMITTEE OF THE WHOLE DISCUSSION PAPER

**Topic:** Small Community Opportunity Program (SCOP) – Economic Development  
Communications Project  
**Date:** January 10, 2024

---

### Background:

SCOP provides funding for non-profits, Indigenous and small communities to build capacity in agriculture, small business, and **local economic development**. There is an opportunity to apply for funding under this program to fund a *County of Minburn Economic Development Communications Project* (one of the recommendations/outcomes of the County's Economic Development Strategy (EDS)).

In addition to a 'Developer's Package' which Council approved in budget 2024, this project would include the following deliverables:

1. Taking the outcomes of the EDS and formalizing them into a set of outputs that can be easily shared among the County's communities through fact sheets.
2. Communications Plan to promote the outcomes/projects related to the Business Retention and Expansion Project.
3. Strengthening the online economic development platforms of the communities within the County.
4. Promoting membership/involvement in the Crossroads Regional Economic Development initiative.

### Information for the Committee:

- Project cost is \$100,000 and the County would be required to provide \$10,000 (10%) as required by the SCOP application guidelines.
- \$20,000 has already been approved for the Developer's Package. We could leverage \$10,000 of this budget for a project valued at \$100,000.
- A large portion of this funding would be used in year 2 of the Crossroads initiative to fund the Regional EDO.
- Only one municipality can apply, but the project will provide tangible benefits to all the Crossroads partners.
- Application deadline is January 10, 2024.
- As part of the grant application, we need to provide one of the following: Council resolution supporting the project, letters/documents confirming matching funds have been received or approved, letters of partnership or a partnership agreement signed by all partners that are collaborating on the project, indicating their specific financial contributions, if applicable.

### Recommendation:

That Council approves administration to apply for the County of Minburn Economic Development Communications Project through SCOP and supports the required municipal contribution of \$10,000.

**Attachment:** *Developer's Package example, SCOP Application Guidelines*

# Small Community Opportunity Program

2023-24 Application Guidelines



Alberta

This publication is issued under the Open Government Licence – Alberta (<http://open.alberta.ca/licence>). Please note that the terms of this licence do not apply to any third-party materials included in this publication.

This publication is available online at <https://open.alberta.ca/publications/small-community-opportunity-program-application-guidelines>

Small Community Opportunity Program: 2023-24 Application Guidelines | Alberta Agriculture and Irrigation

©2023 Government of Alberta | November 9, 2023



# Contents

**Background.....4**

**Overview.....4**

**Timelines.....5**

**Eligibility.....5**

Eligible Applicants.....5

Eligible Projects.....5

Ineligible Projects.....6

Examples of Eligible Projects.....6

**Funding.....8**

Eligible Project Costs.....8

Ineligible Project Costs.....8

Matching Funds.....9

Funding Limitations.....10

**How to Apply.....10**

Required Documents.....10

Applying Online.....10

Protecting Privacy.....11

**After You Apply.....11**

Review Process.....11

**Project Assessment Matrix.....11**

**After Recipients Are Selected.....12**

Reporting.....12

**Contact Information.....12**

**Appendix 1 – Glossary.....13**

**Appendix 2 – Other Government of Alberta Funding Sources.....15**

# Small Community Opportunity Program

## 2023-24 Application Guidelines

Indigenous and small communities are vital to rural Alberta and our province's long-term economic prosperity. The Small Community Opportunity Program recognizes the challenges and unique opportunities these communities face. Through grant funding, it enables Indigenous and small communities, and the non-profit organizations that support them to complete local projects that have a measurable impact driving innovation and growth in rural areas.

### Background

Alberta is taking a whole-government approach to economic development in the province, especially in rural areas. Actions are related to business supports, job creation, healthcare, broadband and infrastructure investment with the goal of a thriving rural Alberta. In 2021 and 2022, the Alberta government held conversations with rural Albertans and Indigenous communities on rural economic development. These insights informed the [Economic Development in Rural Alberta Plan](#) (the Plan) as well as key strategies to address the unique challenges these communities face.

The Plan is founded on guiding principles that promote innovation, diversification and sustainable economic growth and development in rural and Indigenous communities. Through five strategic directions and measurable actions, the Plan is helping ensure these communities have economic opportunities where they live. The five strategic directions include:

1. Economic development-enabling infrastructure: Identify and improve economic development enabling infrastructure to support investment and growth in rural Alberta.
2. Rural business supports and entrepreneurship: Advance entrepreneurship capacity and a culture of innovation across rural Alberta.
3. Support for labour force and skills development: Enable skills development in rural communities to enhance workforce capacity today and for the future.
4. Marketing and promoting rural tourism: Enhance rural Alberta's reputation and capacity as a diverse tourism destination.
5. Rural economic development capacity building: Enhance rural economic development through regional and targeted capacity building.

By establishing the Small Community Opportunity Program, the Alberta government is taking action to address strategic directions 2, 3, 4 and 5. Alberta's [Northern and Regional Economic Development Program](#) supports strategic directions 1 and 5. It provides funding for projects that are regionally-focused or support non-capital investments to assess the feasibility of, or maintain economic development enabling infrastructure.

### Overview

The Small Community Opportunity Program (the Program) provides grants between \$20,000 and \$100,000 for Indigenous and small communities, and non-profits they work with, to build capacity in agriculture, local economic development and small business supports. The program is designed to bridge funding gaps and support capacity building projects from planning to implementation. Communities that meet the rural characteristics described in the Plan may work independently or together, and non-profit organizations may collaborate with them. Through local projects, these communities will tackle challenges and tap into opportunities to achieve sustainable growth and diversification in rural Alberta.

Applicants are encouraged to review these Guidelines and refer to the Glossary for the terms and definitions that are used. (Appendix 1)

# Timelines

Dates	Activity
November 10, 2023	Application intake opens
January 10, 2024	Application intake closes
March 2024	Funding decisions

# Eligibility

## Eligible Applicants

Indigenous communities, Metis Settlements and small municipalities may apply for the Program if they meet the characteristics of rural communities described in the Plan, which indicates they:

- have a population less than 20,000,
- have a limited geographic proximity (approximately 100 km or further) to population centres with more than 25,000 people that could provide employment and services,
- may be remote or have in them, or around them, a significant amount of nature, natural resources, agricultural land and wilderness areas, and
- have a workforce largely focused on primary economic activity, including oil and gas, agriculture and forestry.

Eligible rural communities may work together or independently on local projects, or they may collaborate with non-profit organizations that are:

- a Non-Profit Entity incorporated under Part 9 of the Companies Act (Alberta) or the Canada Not-for-profit Corporations Act with an economic development mandate. (A federally incorporated non-profit must partner with a provincially registered non-profit.)
- a legal non-profit entity located in Alberta that is owned and controlled by an Indigenous community that has at least 51 per cent ownership.

## Eligible Projects

For a project to be eligible it must align with one or more of these strategic directions in the Plan:

- Rural business supports and entrepreneurship
- Support for labour force and skills development
- Marketing and promoting rural tourism
- Rural economic development capacity building.

In addition, the project must address one or more of these priority areas:

- Entrepreneurship and mentorship
- Skills development
- Small business supports
- Partnerships, interconnectivity and collaboration.

Projects must be completed within two years from the date the grant agreement between the Government of Alberta and the recipient is signed. Grant recipients must ensure their project will be sustainable beyond the two-year funding and have a measurable impact supporting, improving or enhancing one or more of the following:

- Rural and Indigenous communities
- Local economic development
- The agriculture sector.



## Ineligible Projects

Projects will not be eligible for grants through the Program if they:

- focus on regional economic development
- support economic development enabling infrastructure.

Funding may be available for these types of projects through Alberta's [Northern and Regional Economic Development Program](#).

## Examples of Eligible Projects

The following examples illustrate projects that would be eligible for the Program. The list is not exhaustive and should not limit other potential projects that applicants may be considering. For guidance on a project idea, contact [agi.ruraleconomicdevelopment@gov.ab.ca](mailto:agi.ruraleconomicdevelopment@gov.ab.ca).

**Entrepreneurship and Mentorship:** Projects that advance entrepreneurship capacity and a culture of innovation across rural Alberta.

Project Type	Description	Example Projects
Capacity Building	Projects that build entrepreneurship capacity to support economic development in rural and Indigenous communities	<ul style="list-style-type: none"><li>○ Entrepreneurship training modules, sessions</li><li>○ Mentorship programs</li><li>○ Collaborative partnerships to support entrepreneurship training and leadership development</li><li>○ Projects supporting innovation. For example: housing initiatives supporting rural immigrants, youth retention, etc.</li><li>○ Projects supporting agriculture. For example: agri literacy, youth attraction to the sector, mental health initiatives to support the sector, mentoring and coaching, agritourism, etc.</li></ul>

**Skills Development:** Projects that enable skills development in rural communities to increase workforce capacity today and for the future.

Project Type	Description	Example Projects
Skills Development Training	Projects that increase workforce capacity through leadership and skills development to enable rural, Indigenous and/or agricultural businesses to grow existing markets or access new markets	<ul style="list-style-type: none"><li>○ Skills training</li><li>○ Training/workshops in innovation</li><li>○ Employment partnerships</li><li>○ Economic Development Officer training</li><li>○ Mentorship training programs</li><li>○ Collaborative partnerships to support training and leadership development</li><li>○ Occupational and safety training</li><li>○ Sector based training</li><li>○ Employee training</li><li>○ Youth training</li></ul>
Initiatives	Activities that build awareness of in-demand skills within the agriculture sector, rural and Indigenous communities	<ul style="list-style-type: none"><li>○ Partnerships between rural businesses and organizations to host career fairs that create awareness of in-demand skills</li><li>○ Collaborations to create online awareness campaigns that create awareness of in-demand skills</li></ul>

- Partnerships and collaborations that increase awareness and information about in-demand skills in agriculture

**Small Business Supports:** Local projects for communities to support rural small businesses in building capacity to alleviate challenges and access economic opportunities.

Project Type	Description	Example Projects
Small Business Training	Projects that provide information and training to help small rural, Indigenous and/or agriculture businesses start up and grow	<ul style="list-style-type: none"> <li>○ Seminars or workshops for business management</li> <li>○ Leadership development</li> <li>○ Human resource development</li> <li>○ Business tax law training</li> </ul>
Networking	Projects that increase networking relationships	<ul style="list-style-type: none"> <li>○ Events to bring multiple business owners, suppliers and financial institutions together</li> <li>○ Webinars for continued networking</li> </ul>
Economic Development Supports	Projects that hire and support economic development officers in building small business capacity and managing projects	<ul style="list-style-type: none"> <li>○ Training sessions/workshops for economic development officers</li> <li>○ Projects led by economic development officers to train and promote activities to small businesses</li> <li>○ Projects led by economic development officers to increase networks among small business owners</li> </ul>

**Partnerships, Interconnectivity and Collaborations:** Local projects that build capacity and enhance rural economic development through targeted partnerships and collaborations.

Project Type	Description	Example Projects
Strategic Planning	Local projects that develop a strategy to grow the local visitor economy or local agricultural activity and sustainability	<ul style="list-style-type: none"> <li>○ Partnership to access community attraction</li> <li>○ Impact studies for Trade Corridor development</li> <li>○ Community planning</li> </ul>
Capacity Building	Local projects that foster a collaborative rural ecosystem by demonstrating partnerships and collaboration between businesses, communities and/or municipalities	<ul style="list-style-type: none"> <li>○ Cultural awareness activities</li> <li>○ Promotional activities to create awareness of community resources</li> <li>○ Projects that promote resource-sharing</li> </ul>
Enhancing Communication Capabilities	Local projects to enhance communication among rural communities, Indigenous communities and organizations, and non-profit organizations	<ul style="list-style-type: none"> <li>○ Community/multi-community activities to connect and collaborate</li> <li>○ Information sharing venues online and/or in-person</li> <li>○ Community job exchange placements</li> <li>○ Initiatives to promote membership in rural economic development organizations</li> </ul>
Marketing and Promoting Rural Tourism	Local projects that enhance rural Alberta's reputation and capacity as a diverse tourism destination	<ul style="list-style-type: none"> <li>○ Agritourism</li> </ul>

## Funding

Applicants may apply for grants between \$20,000 and \$100,000 for each project. The grant may fund up to 90 per cent of eligible project costs and the applicant must fund at least 10 per cent.

### Eligible Project Costs

Project costs that are eligible for the grant include:

- Skills development training
- Training equipment and supplies
- Salary expenses for new contract staff to deliver a project
- Equipment and supplies to deliver the project (computers, software, office supplies, etc.)
- Eligible travel costs for hotel, meals and mileage based on Government of Alberta [Travel, meal and hospitality expenses policy](#)
- Promotion and marketing activities related to the project
- Project administration up to 10 per cent of the total eligible project costs
- Any other expense the Government of Alberta deems eligible under the Program.

### Ineligible Project Costs

Project costs that are not eligible for the grant include:

- Capital infrastructure including capital assets such as a new building, machinery and technological equipment
- High school or post-secondary education to receive a diploma or degree
- Health and wellness programs
- Faith-based or political activities
- Alcohol and entertainment
- Gifts, gift cards, contests, prizes, awards, trophies and plaques
- Contingency and miscellaneous costs
- Salary expenses for existing staff
- Legal and accounting fees, federal goods and services tax (GST) and insurance
- Membership fees
- Sponsorships
- Land acquisition
- Projects that may duplicate existing economic development initiatives in the community or region that is applying for funding
- Non-arm's length transactions (e.g. payments to an affiliated organization, payments to directors/board members or their families)
- Debt reduction or interest expenses
- Lobbying or advocacy activities
- Expenses to prepare funding applications or hold committee planning meetings
- Fundraising and similar activities not related directly to the project
- Retroactive funding for costs incurred prior to submitting the Grant application
- Expenses incurred to form a new community or regional economic development organization
- Permits
- Any other cost the Government of Alberta deems ineligible under the Program.

The project must commence when the grant is distributed and be completed within two years. Large projects may receive funding installments, with the majority of the grant provided at the onset.

# Matching Funds

Applicants may cover their portion of eligible project costs by matching funds from their organization with monetary payments or grants from one or more of the following:

- Municipal government
- Federal government
- For-profit enterprises, non-profit organizations and post-secondary institutions
- Private sector programs, such as corporate social responsibility initiatives.

When the application is submitted, applicants must provide evidence that all matching funds (including their own) have been received, approved, or confirmed. Applicants must include a letter from each organization that:

- Is on the appropriate letterhead
- Confirms the funding has already been secured and received, or that it is committed and approved
- Is signed by a leader with the authority to commit funds for the organization (i.e. finance officer, director or equivalent).

Please note: The Program will not accept in-kind contributions.

## Matching Fund Examples

### Example 1

First Nation applicant pursuing a \$100,000 project:

- Application submitted for a \$90,000 grant
- Applicant must have received or been approved for \$10,000 in matching funds

Program request	\$90,000
Cash contribution from applicant	\$5,000
Cash contribution from municipal partner	\$5,000
Total	\$100,000

### Example 2

Municipality applicant pursuing a \$50,000 project:

- Application submitted for a \$45,000 grant (90 per cent of the project's value)
- Applicant must have received or been approved for \$5,000 in matching funds (10 per cent of the project's value).Program request

Cash contribution from applicant	\$2,500
Cash contribution from Federal government	\$2,500
Total Project Value	\$50,000

## Funding Limitations

Small Community Opportunity Program grant recipients cannot receive any other funding for their project or related activities from the Government of Alberta or its agencies. Appendix 2 provides examples of these funding programs. This means recipients cannot 'stack' or receive multiple funding sources from the Government of Alberta or its agencies for a single project.

In addition, recipients cannot use Program funding for projects or activities that are contrary to applicable legislation or regulations. However, once the Program-funded work is complete, new activities may be supported by other funding sources from Government of Alberta or its agencies. For example, if the grant was used to develop a strategy, the activities to implement the strategy may be eligible for funding from another funding program offered by the Government of Alberta or its agencies. As well, the Program will not accept in-kind contributions.

## How to Apply

Applicants can apply online until **11:59 p.m. (MST), January 10, 2024**. Before starting the application process, applicants are encouraged to review this entire guide and have supporting documents on hand. Depending on the project and applicants, some or all of the required documents listed below may be needed to complete the online questionnaire. Applicants may be asked to send the required documents to the Program to finalize their application.

## Required Documents

- A complete budget signed by a board treasurer, financial officer or similar representative and substantiated by one or more of the following:
  - quotes
  - estimates
  - historical information
  - other relevant evidence demonstrating how the requested amount was calculated.
- The most recent audited or unaudited financial statements.
- A Municipal Council Resolution signed by authorized representatives.
- A Metis Settlement Council Resolution signed by authorized representatives of the organization.
- A Band Council Resolution with signatures from a quorum of council that authorize the project, when the applicant is a First Nation.
- Letters or documents confirming matching funds have been received or approved.
- A letter or documents from a provincial or federal regulator confirming regulatory approval has been provided, if the project requires regulatory approval.
- A list of the board of directors, executive committee and/or decision-making body for each organization partnering in the application, including the individual's names, position/title, daytime phone numbers and email address.
- A letter of support signed by the local municipality for a non-profit organization and the project it will deliver with grant funding.
- Letters of partnership or a partnership agreement signed by all partners that are collaborating on the project, indicating their specific financial contributions, if applicable.

## Applying Online

When beginning the online application process, applicants will create an account to access a questionnaire. Having an account allows applicants to log in and complete the questionnaire whenever it is convenient. Applicants can apply online until **11:59 p.m. (MST), January 10, 2024** at [alberta.ca/small-community-opportunity-program](https://alberta.ca/small-community-opportunity-program).

## Protecting Privacy

When completing the Program Application, the Government of Alberta will collect personal information in accordance with section 33(c) of the Freedom of Information and Protection of Privacy Act (the FOIP Act) (RSA 2000, C.F-25) and it will be protected under Part 2 of the Act. Any personal information that is provided in the Program Application Form and associated attachments will be used for the purpose of assessing applications made to the Program. The information collected in the Program Application Form and associated attachments will also be used to report on the success of each applicant's project, and information from all applicants will be used in aggregate to report on the success of the Grant. Should you require further information about collection, use and disclosure of personal information, please direct your questions or inquiries to the Manager, Alberta Agriculture and Irrigation by telephone at 310-FARM, by email at [agi.ruraleconomicdevelopment@gov.ab.ca](mailto:agi.ruraleconomicdevelopment@gov.ab.ca).

## After You Apply

### Review Process

All application submissions go through a multi-stage review process, starting with an administrative screening to check for completeness and eligibility based on the guidelines in this document. Applicants are responsible for ensuring their application is complete and submitted prior to 11:59 (MST), January 10, 2024.

All eligible applications will be evaluated by a Program selection committee. It will be comprised of representatives from the Government of Alberta and its agencies who are not administering the Program. Committee members bring multidisciplinary expertise to the review process and are chosen based on their:

- Area of expertise
- Sector knowledge
- Economic development knowledge
- Investment and capital attraction knowledge
- Senior leadership experience.

The selection committee will evaluate all application submissions using the Project Assessment Matrix below. As the Program has limited funding, not all eligible applicants will be awarded a grant. All applicants will be notified about the status of their submission by email.

## Project Assessment Matrix

Category	Criteria	Weight
<b>Project Description / Opportunity</b>	<b>Anticipated Outcomes</b> There is evidence the project: <ul style="list-style-type: none"><li>○ addresses and supports the priorities and needs of the community and/or the industry sector, including the agriculture sector</li><li>○ has support from one or more communities</li><li>○ includes ways to grow and/or diversify the economy</li><li>○ creates or retains jobs during the project and/or after completion</li><li>○ develops and sustains partnerships and collaborations with industry, communities, First Nations and Métis communities and organizations and rural areas</li></ul>	<b>20</b>
<b>Alignment with Capacity Building Priorities and the Plan Strategic Directions</b>	<b>Strategic Fit</b> There is evidence the project: <ul style="list-style-type: none"><li>○ identifies tangible and measurable economic benefits</li><li>○ demonstrates alignment with a least one of the following priority areas:<ul style="list-style-type: none"><li>– entrepreneurship and mentorship</li><li>– skills development</li></ul></li></ul>	<b>20</b>

	<ul style="list-style-type: none"> <li>- small business supports</li> <li>- partnerships, interconnectivity and collaboration</li> </ul>	
<b>Economic Impact</b>	<b>Project Reach</b> There is evidence the project: <ul style="list-style-type: none"> <li>o has a measurable outcome to increase the economic capacity of one or more rural or Indigenous communities (based on the 'rural' definition in the Plan)</li> <li>o identifies ways to create economic impact in the community or communities</li> </ul>	<b>20</b>
<b>Budget</b>	<b>Costs and Funding Sources</b> The application submission provides: <ul style="list-style-type: none"> <li>o a completed budget with descriptions and justifications for eligible costs that will be incurred throughout the project</li> <li>o line-item costing</li> <li>o evidence the applicant's funding and any matching funds are received or approved</li> <li>o evidence there are no matching funds for the project or related activities from any other funding programs offered by the Government of Alberta or its agencies (Appendix 2)</li> </ul>	<b>20</b>
<b>Management</b>	<b>Management and Implementation Strategy</b> The application submission provides: <ul style="list-style-type: none"> <li>o sound project management methodology, including milestones and critical success factors</li> <li>o risk identification and mitigation strategies</li> <li>o an implementation approach and timeline</li> </ul>	<b>10</b>
<b>Agriculture Related</b>	<b>Agriculture Sector</b> <ul style="list-style-type: none"> <li>o The application supports the development of the agriculture sector in a meaningful and measurable way.</li> </ul>	<b>10</b>

## After Recipients Are Selected

Successful applicants will be emailed a Grant Agreement that outlines the funding terms and conditions. It must be completed and signed by the recipient organization's authorized representative, then returned to the Government of Alberta by the deadline indicated in the email. Once received, a government representative will sign the agreement and a grant cheque will be sent to the recipient.

Grant recipients are encouraged to acknowledge the Government of Alberta as a project funder in announcement and promotional communications, such as news releases, social media posts, websites, newsletters, presentations, etc. Before making public announcements or promoting the funded project, contact the Program for guidance on recognizing the Government of Alberta and opportunities to collaborate and build public awareness.

## Reporting

The Grant Agreement outlines the reporting requirements and schedule. Recipients must regularly report on the project's financial status and outcomes achieved. If the project scope or deliverables change after the Grant Agreement is in place, the recipient must contact the Program. Both parties must agree to amend the Grant Agreement to accommodate the changes.

## Contact Information

Grant applicants and recipients can connect with the Alberta Small Community Opportunity Program by emailing [agi.ruraleconomicdevelopment@gov.ab.ca](mailto:agi.ruraleconomicdevelopment@gov.ab.ca).

## Appendix 1 – Glossary

Term	Definition
90/10 Rule	A funding guideline for the Program, whereby where the applicant provides 10 per cent of the Eligible Project Costs, and the grant provides 90 per cent.
Eligible Project Cost	A cost for a project that is eligible for Program funding, as listed in the Guidelines.
Grant	Funding from the Program that is granted to a successful applicant.
Grant Agreement	<p>The legal agreement that commits a successful Rural Economic Development Capacity Building Grant applicant to the terms and conditions of the Program, including the terms under which the Grant will be paid.</p> <p>Successful applicants will receive a standardized agreement that they must sign and return within the timelines specified. Once the Government of Alberta representative has approved and signed an applicant's agreement, funding will be paid to the applicant.</p>
Local	Local refers to an area that is a neighborhood, business district, small town, or other similar area. There is normally a generally recognized name or description for this area.
Metis Settlement	A "settlement" as defined in the <i>Metis Settlements Act</i> .
Moderate Metropolitan Influence Zones	This category includes Census Subdivisions (CSD) in provinces where at least 5 per cent but less than 30 per cent of the CSDs resident employed labour force commute to work in any census metropolitan area or census agglomeration. It excludes CSDs with fewer than 40 persons in their resident employed labour force ( <a href="#">Statistics Canada</a> ).
Municipality	<p>As listed on <a href="#">Municipal Affairs Municipal Profiles</a>, including:</p> <ul style="list-style-type: none"> <li>○ Alberta incorporated municipalities recognized under the <i>Municipal Government Act</i> and <ul style="list-style-type: none"> <li>– Cities</li> <li>– Towns</li> <li>– Villages</li> <li>– Municipal Districts</li> <li>– Counties</li> <li>– Summer Villages</li> <li>– Specialized Municipalities</li> </ul> </li> <li>○ Alberta Improvement Districts recognized under the <i>Municipal Government Act</i></li> <li>○ Alberta Special Areas as defined in the <i>Special Areas Act</i></li> </ul> <p>And Alberta Regional Services Commissions as defined in the <i>Municipal Government Act</i></p> <ul style="list-style-type: none"> <li>○ Controlled Corporations, as defined in the <i>Municipal Government Act</i>, with an economic development mandate.</li> </ul>
Non-Profit Entities	Federally or provincially incorporated non-profit organizations that have been actively operating for a minimum of one year and are in good standing with required regulatory filings.
Outcome	The impacts or consequences from the products or services produced, which address the question: What has been achieved by the project?
Outcome Indicators	Specific data that tracks project success and describes observable, measurable characteristics or changes that represent the achievement. Measurement activities could include administering a follow-up procedure or knowledge test with a learner or client to determine improvement resulting from direct instruction, conducting a survey or focus group to get feedback from a targeted group. A good example of an outcome indicator: The number and percentage of learners who complete the program and increase their score by 10 or more points on pre- and post-questionnaire. A poor example: The number of learners attending the program. This is an 'output' (total number of clients) rather than an outcome indicator as it does not describe the impact the program had on the learners.



Partner	Is a collaborating organization that will have an integral role in the completion of the project. This may include in-kind contributions such as expertise, staff time or use of facilities.
Program	The Small Community Opportunity Program
Regional	Regional refers to a larger area that encompasses more than one local area that comprises a larger area that is generally recognized as a region.
Rural	<p>During engagement sessions that informed the Economic Development in Rural Alberta Plan, participants suggested the most common characteristics of rural communities include:</p> <ul style="list-style-type: none"> <li>○ a population of less than 20,000 people</li> <li>○ limited geographic proximity to population centres over 25,000 that could provide employment and services</li> <li>○ communities may be remote or have in them, or around them, a significant amount of nature, natural resources, agricultural land, and wilderness areas, and</li> <li>○ a workforce largely focused on primary economic activity, including oil and gas, agriculture and forestry.</li> </ul>

## Appendix 2 – Other Government of Alberta Funding Sources

The Government of Alberta and its agencies administer a number of funding programs that support economic development projects. When applying for the Program, applicants cannot use the following programs as matching funds. This list is not exhaustive and there may be other sources not identified below. Applicants are reminded to disclose all the funding sources that have been received or approved when the application is submitted.

Program Name	Administered By
<a href="#">Aboriginal Business Investment Fund</a>	Alberta Indigenous Relations
<a href="#">Alberta Broadband Fund in Partnership with the Universal</a>	Alberta Technology and Innovation in partnership with the Government of Canada
<a href="#">Alberta Community Partnership</a>	Alberta Municipal Affairs
<a href="#">Capacity Grant Program</a>	Alberta Indigenous Opportunities Corporation
<a href="#">First Nations Development Fund</a>	Alberta Indigenous Relations
<a href="#">Indigenous Reconciliation Initiative – Economic Stream</a>	Alberta Indigenous Relations
<a href="#">Indigenous Tourism Alberta Micro Fund</a>	Indigenous Tourism Alberta
<a href="#">Municipal Sustainability Initiative</a>	Alberta Municipal Affairs
<a href="#">Northern and Regional Economic Development Program (NRED)</a>	Alberta Jobs, Economy and Trade
<a href="#">Strategic Transportation Infrastructure Program (STIP)</a>	Alberta Transportation and Economic Corridors
<a href="#">Travel Alberta - Product Development Fund</a>	Travel Alberta



# The County of Vermilion River



## DEVELOPERS PACKAGE



County of  
VERMILION River



# Investing in the County of Vermilion River

The County of Vermilion River is poised for investment as Administration and Council continue to focus on Economic Development and new growth opportunities. Now is the time to plant roots for your next business venture or expansion.

The County is a large, rural municipality with a diversified economy, and a population of over 8,000 people. It is a dynamic, friendly place to do business with strong growth potential. There are business opportunities in the energy and agricultural sectors of the community, reasonable land costs, and it boasts a skilled, highly adaptable labour force.

There are eight unincorporated hamlets, three villages and one town located within the geographic boundaries of the County, producing a larger regional population of over 13,500. The closest major City of Lloydminster borders the County in the East, which continues to bolster our industry and tourism revenues.

The combined populations of the County's full geographic region along with the City of Lloydminster, opens up a Trade Area of over 45,000.

Our municipal operations are based out of Kitscoty, Alberta—near the geographic center of the County. The many features, amenities and opportunities in our municipality make it “A sustainable and diversified community with opportunities for all”.

## Start your investment planning today!

Economic Development Officer

**780-846-2244**

[Economicdevelopment@county24.com](mailto:Economicdevelopment@county24.com)

[www.vermilion-river.com](http://www.vermilion-river.com)

## Key Economic Indicators

Region  
Population  
**13,539**

Available  
Labour Force  
(Region)  
**10,625**

Major  
Projects  
(Region)  
**\$718M**

Development  
Permits  
(Region)  
**\$29.9M**

Region  
Land Area  
(Sq. Km.)  
**5,437**

Vacant Land  
& Commercial  
Spaces  
(County)  
**32**

Occupied  
Jobs  
(Region)  
**7,500**

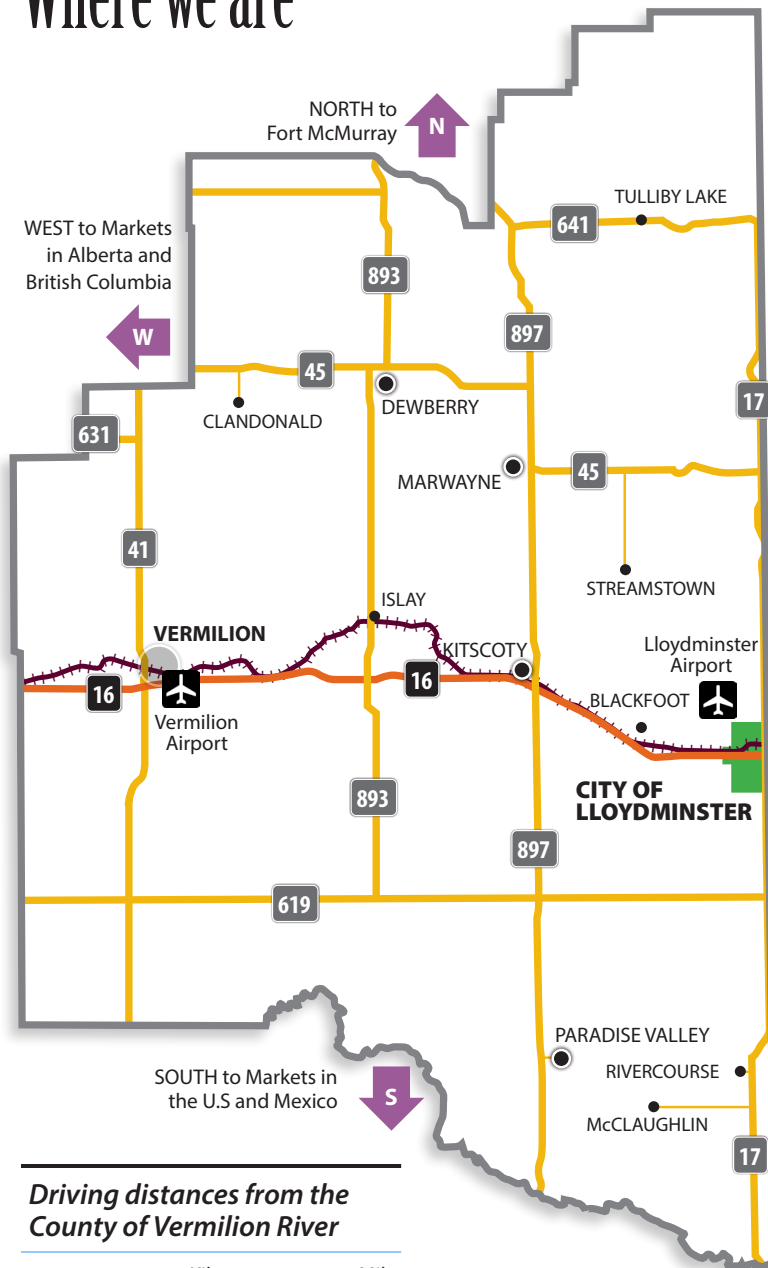
Businesses  
(Region)  
**680**

## Top Industries

(No. of Businesses in Region)

- Agriculture, forestry, fishing & hunting
- Construction
- Other services (except public administration)
- Retail trade
- Professional, scientific and technical services

# Where we are



## Driving distances from the County of Vermilion River

	Kilometres	Miles
Edmonton	200	125
Calgary	450	280
Vancouver	1,345	840
Winnipeg	1,115	696
Toronto	3,201	2,000
Los Angeles	2,764	1,728
Chicago	2,427	1,517
Houston	3,316	2,073
New York	3,689	2,306



## Location

The County of Vermilion River (CVR) is a rural municipality in east-central Alberta. The eastern border coincides with the Alberta-Saskatchewan border and the City of Lloydminster.

## Accessibility

An excellent transportation system that connects your business to global markets. Highway 16 (TransCanada Yellowhead) runs through the center of the County and is the major northern east/west trade route connecting to the west coast ports. Rail access exists with CN's northern secondary mainline traveling east/west with a terminal point in Vermilion. Air service exists with Airports in Vermilion and Lloydminster, and close access to international airports in Edmonton and Calgary.

TOWN	HAMLET	HIGH LOAD HIGHWAY	AIRPORT
VILLAGE	OTHER	HIGHWAY	RAILWAY





# Economic Profile

## Transportation

The County of Vermilion River is well served with a network of quality transportation systems. The transportation infrastructure in the County is a major factor in supporting the primary industries in the region including the oil and gas industry, related oil and gas service industries, and the County's varied agriculture operations. The County's integrated highway, rail and air systems allow for efficient delivery and transport of goods and people throughout the communities in the County of Vermilion River.

### Transportation System

#### ROAD SYSTEM

- East/West - Highway 16 (Yellowhead), 45 & 619
- North/South - Highways 41, 893, 897 & 17

The main east-west highway traversing central Alberta, Provincial Highway 16, travels directly through the County of Vermilion River. The highway is designated as a core route in Canada's National Highway System and forms the Yellowhead branch of the Trans-Canada Highway. Highway 45 connects several communities in the County and to the two dominant north-south routes, Highway 41 and Highway 897. These two routes provide connection into the industrial developments of northeastern Alberta as well as tourism destinations both in northeastern Alberta and northwestern Saskatchewan. Highways 893 and 17 also connect the region from north to south, intersecting Highways 45, 16 and 619. Highway 14, in the southeast corner of the County, connects to the heavy rail network to the west through Wainwright.

#### RAIL SYSTEM

- Canadian National Railway

CN's northern secondary mainline travels east-west through the County to the south, along Highway 16 and connecting Saskatoon and Edmonton. The Town of Vermilion is a terminal point for CN and contributes to the success of agricultural shipping from this area. Spur trackage is available as well as CN lease land for industrial and commercial entities. There are several spur lines available including ones at Lloydminster, Kitscoty and Vermilion. There is a long siding at the Hamlet of Blackfoot to allow for trains passing.

#### AIR SERVICE

- Vermilion Airport – two asphalt runways: 3300' x 75' (1029m x 22m) and 2200' x 75' (695m x 22m)
- Lloydminster Airport – two runways: 5,579' x 150' (1,700 x 46 m) asphalt and 1,500 x 100 ft (457 x 30 m) unpaved grass

The County is located approximately 200 kilometres northeast of Edmonton International Airport, which is the primary air passenger and air cargo facility in the Edmonton region and is a major hub facility for Northern Alberta and Northern Canada.

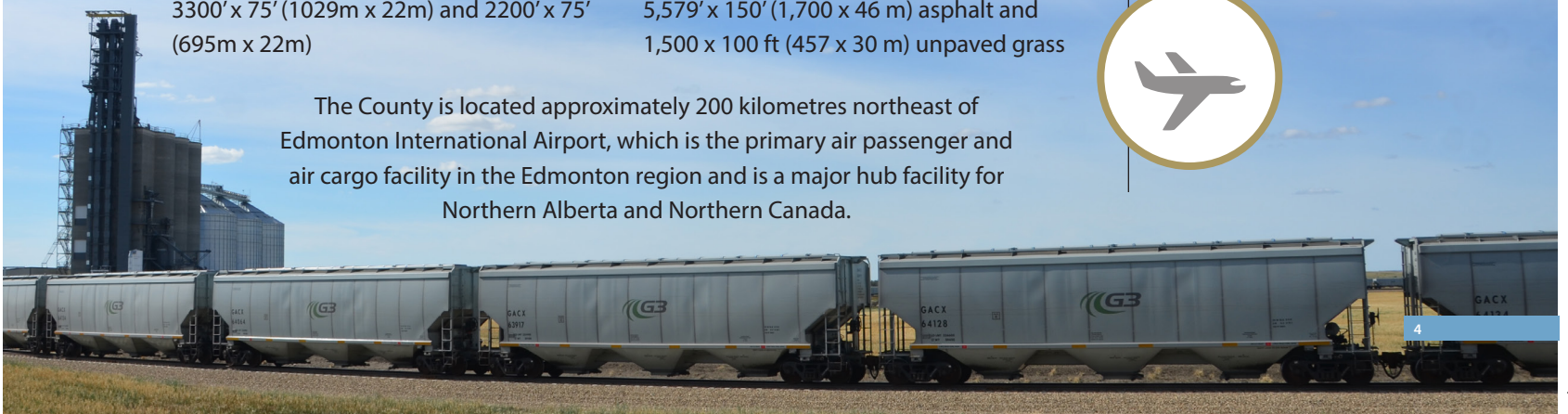
#### CLOSEST CANADA/U.S. PORTS OF ENTRY

- Wild Horse
- Willow Creek
- Coutts / Sweet Grass
  - Carway
  - Del Bonita

#### CLOSEST SHIPPING PORTS:

- Port of Prince Rupert, BC
- Port of Vancouver, BC
- Port of Victoria, BC
- Port of Churchill, MB

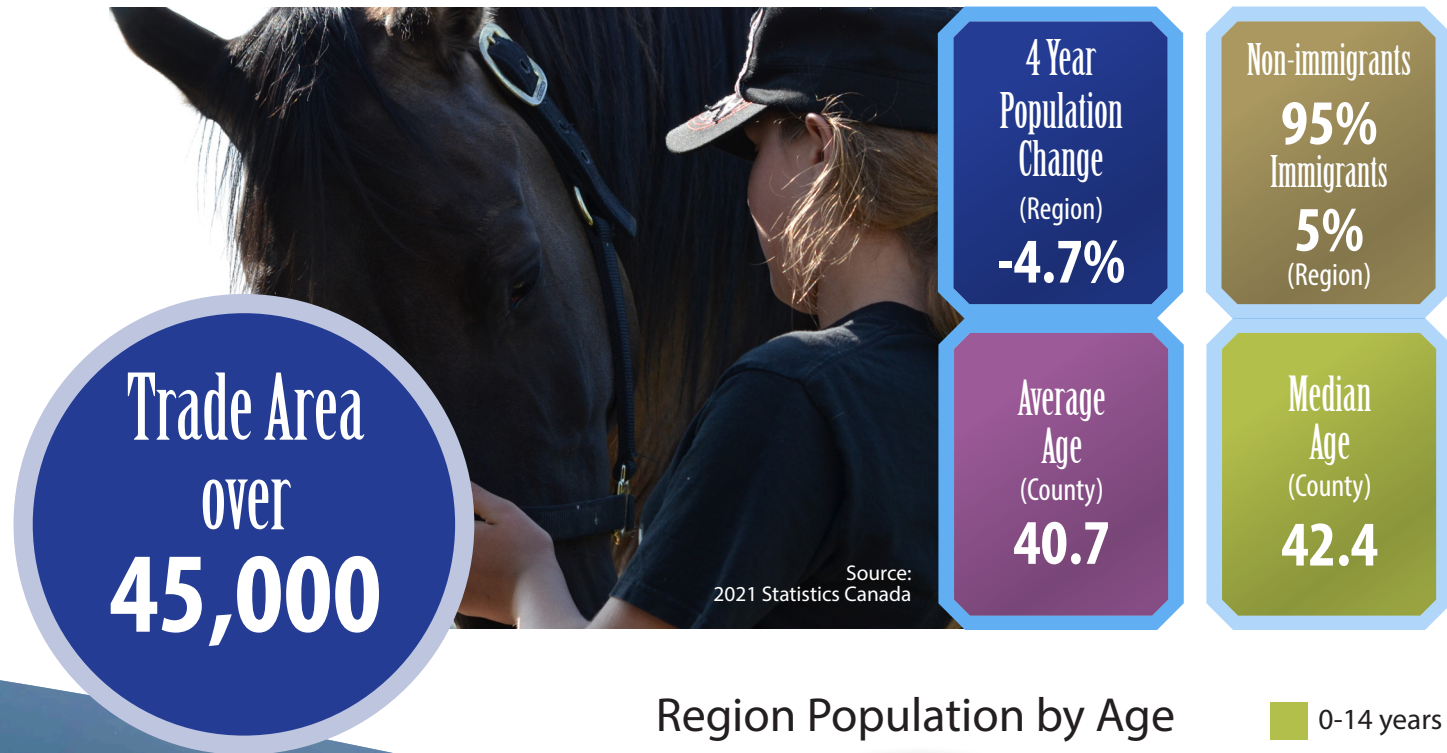
The area is also serviced by several trucking, bus and courier service companies.



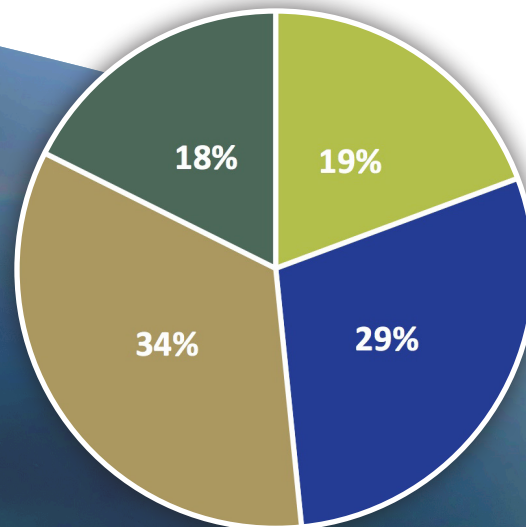


## Demographics

The County boasts a trade area of over 45,000, which includes the County's region population of over 13,500 and additional 31,600 residents within the neighbouring City of Lloydminster. The combined area populations bolster the County's tourism and other industry revenues.



### Region Population by Age



- 0-14 years
- 15-39 years
- 40-64 years
- 65+ years

### GEOGRAPHIC REGION

County of Vermilion River  
**13,539**

County of Vermilion River incl. Hamlets **8,043**

Town of Vermilion **3,948**

Villages of Kitscoty, Marwayne, Paradise Valley **1,548**

CITY OF LLOYDMINSTER (AB/SK)  
**31,582**



County of Vermilion River - Developers Package



County of Vermilion  
River Natural Gas  
Refueling Station  
at Kitscoty

## Major Projects

Over **\$718 M** in planned or active major  
projects impacting the County  
(as of February 2023)

### Grizzley Bear Creek Wind Project \$250 M

Enel Green Power

Consisting of 34 wind turbines, the 152  
MW wind project will generate 528  
GWh of energy annually and avoid over  
343,000 tons of CO<sub>2</sub> emissions a year.

### Northern Valley Wind Power Project

Elemental Energy

Early stages planning for new wind  
power infrastructure including  
Community Outreach and  
Consultation, Environmental  
review, Project Impact Studies  
and Preliminary Layout.



### The Alberta Central East (ACE) Regional Waterline \$140 M

A regional entity (owned by the  
12 member municipalities) that  
will supply high quality potable  
water to the municipalities in  
the Counties of Minburn, Two  
Hills and Vermilion River. The  
full regional system will include  
350+ kilometers of pipeline, two  
Water Transfer (pump) Stations  
(WTS) located near Vegreville  
and Lloydminster along with  
community fill stations and truck  
fill stations.

### Blackfoot Lagoon \$3.89 M

Alberta Municipal Water/Wastewater  
Partnership and County of Vermilion  
River

Construction of a discharge line  
to Blackfoot Creek. Design of  
expansion of Lagoon holding  
capacity.

### Kenilworth 1 Distributed Energy Resource \$1.4 M

Versorium

Development of natural gas to  
electrical conversion.

### Transmission Power Line Project \$241 M

AltaLink

This project is required because  
of projected moderate growth of  
pipeline load, urban development,  
industrial and oilsands growth.

### Lloydminster Wastewater Treatment Facility \$81.5 M

City of Lloydminster

Constructing a mechanical  
wastewater treatment facility near  
the existing wastewater lagoons  
to establish a modernized efficient  
system.





## Development Permits

### \$29.9M (Region)

Commercial	\$2.6M
Industrial	\$2.0M
Institutional	\$13.2M
Residential	\$12.1M

Source: Regional Alberta Dashboard - Adapted from Statistics Canada, Building Permits Survey

Subdivisions  
(Residential)  
**18**

Vacant Land  
& Commercial  
Spaces  
(County)  
**32**

## Development Incentives

### \$500 REBATE

on residential  
properties

Provincial  
incentives:  
[www.investalberta.ca](http://www.investalberta.ca)



## Land and Available Business Space

There are currently five large industrial areas in the County all with unique attributes.

### Location Vacant Parcels

**Devonia Business Park**  
NW-31-49-1  
[www.devoniabusinesspark.com](http://www.devoniabusinesspark.com)

**7**

#### Reinhart Property Management

• Industrial Park

**1**

• Business Park  
SE-5-50-1 & NW-9-50-1  
[www.reinhartpm.com](http://www.reinhartpm.com)

**2**

**Corridor Business Park**  
N-33-49-1

**5**

**County Energy Park**  
SW-4-50-1

**3**

**Kam's Industrial Park**  
NE-31-49-1

**8**

## Business Resources

The County of Vermilion River takes pride in supporting our businesses with resources and marketing. The County is proud to partner with Business Link and the Lloydminster Chamber of Commerce to provide the Digital Economy Program to businesses in the County.

### LOCAL BUSINESS RESOURCES

County of Vermilion River  
Business Link

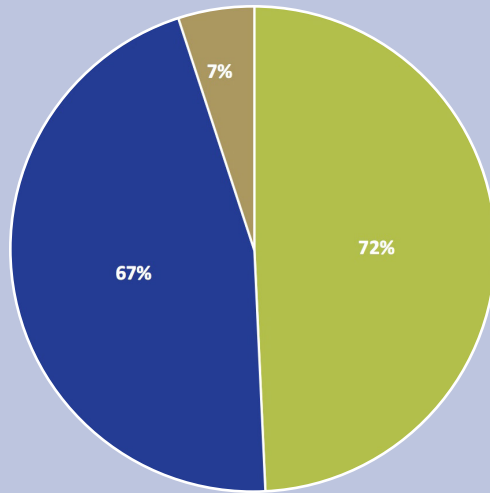
Community Futures -  
Lloydminster & Region

Chambers of Commerce:  
Vermilion & District,  
Marwayne, Lloydminster



# Labour Market

Available  
Region  
Labour  
Force:  
**10,625**



■ Participation Rate ■ Employment Rate ■ Unemployment Rate

The County of Vermilion River Region has an available and educated labour force (over 15 yrs old) of 10,625. Additional labour can be drawn from the neighbouring major City of Lloydminster (over 24,000 in available labour force).

Occupied  
Jobs  
**7,500**

## PLACE OF WORK STATUS

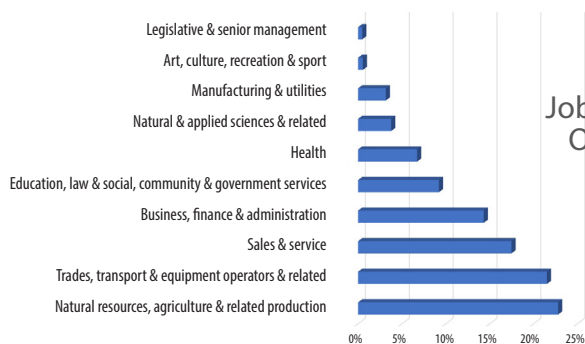
Usual place of work **58%**  
Worked at home **25%**  
No fixed workplace address **17%**

## COMMUTING DESTINATION

To a different census subdivision within census division of residence **47%**  
Within census subdivision of residence **36%**  
To a different province or territory **10%**  
To a different census subdivision and census division within province or territory of residence **7%**



Top Employers  
by Region  
Industries



Jobs by Region  
Occupation

Source: 2021 Statistics Canada





# Main Industries

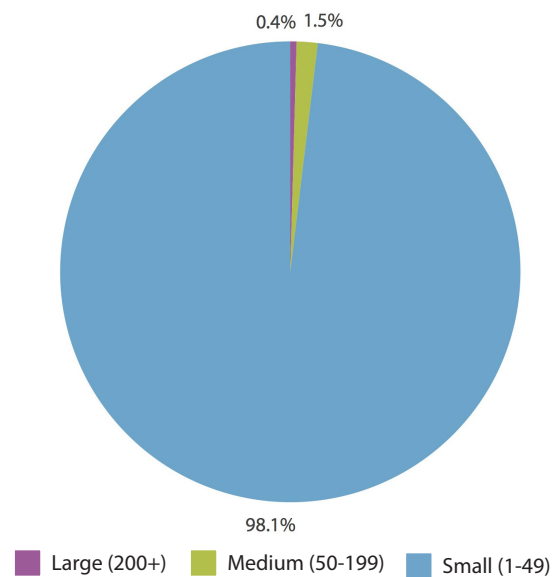
## Businesses by Industry

Agriculture, forestry, fishing and hunting	25
Construction	11
Other services (except public administration)	9
Retail trade	9
Professional, scientific and technical services	8
Transportation and warehousing	7
Mining, quarrying, and oil and gas extraction	5
Health care and social assistance	4
Real estate and rental and leasing	4
Wholesale trade	4
Accommodation and food services	3
Administrative and support, waste management and remediation services	3
Finance and insurance	3
Manufacturing	2
Educational services	1
Arts, entertainment and recreation	1
Information and cultural industries	1
Public administration	1
Management of companies and enterprises	0

Number of  
Businesses  
(Region)

680

## Size of Businesses



## Variety of Home-Based Businesses

From Mechanical  
and Welding to  
Account and  
Online Sales

Source: Regional Alberta Dashboard: Adapted from  
2021 Statistics Canada, Establishment Counts by CSD,  
derived from the Business Register.

## Natural Gas

The County of Vermilion River has a natural gas refueling station located at Kitscoty on Highway 16, providing sales of natural gas for commercial fleet fueling.

Residential Sales	\$750,000 GJ
Industrial Sales	\$400,000 GJ
<b>Total Sales</b>	<b>\$1,150,000 GJ</b>
Transportation	\$1,500,000 GJ
<b>Total Volume</b>	<b>\$2,650,000 GJ</b>

## Oil

**Total Oil Production**  
**1,252,300 m<sup>3</sup>**

Based 2022 AER data for  
County of Vermilion River

**Estimated Revenue for  
Oil Production  
Over  
\$300,000,000**

(based on an  
average of \$40/barrel)

## Agriculture

Overview	2016*	2021*	% ±
Number of Farms	1,052	1,125	6.94%
Total Land Area - km <sup>2</sup>	5,519.75	5,420	-1.81%
Land in Crops - Acres	763,580	825,559	8.12%
Natural land for pasture - Acres	303,450	362,357	19.41%
Number of Farm Operators	1,435	1,525	6.27%
Number of Employees	746	529	-29.09%
Gross Farm Receipts	\$405,991,767	\$655,168,180	61.37%

### Livestock Overview

Value of Livestock & Poultry	\$283,193,398	\$241,232,330	-14.82%
Cattle and Calves #	131,376	152,591	16.15%
Dairy Cows #	n/a	193	n/a
Beef Cows #	n/a	58,217	n/a
Heifers #	16,643	26,123	56.96%
Calves #	42,573	46,165	8.44%
Steers #	18,711	18,522	-1.01%
Bulls #	3,495	3,371	-3.55%
Pigs #	n/a	39,123	n/a
Hens and Chickens #	73,096	134,944	84.61%
Sheep and Lambs #	3,614	1,955	-45.90%

### Crop Overview

Canola - acres	255,773	293,676	14.82%
Wheat - acres	225,534	252,290	11.86%
Barley - acres	82,634	100,721	21.89%
Alfalfa and alfalfa mixtures - acres	64,187	35,628	-44.49%
All other tame hay and fodder crops - acres	27,179	31,522	15.98%
Oats - acres	24,513	31,764	29.58%
Dry field peas - acres	51,066	41,718	-18.31%
Quinoa - acres	4,000	11	-99.73%
Lentils - acres	1,845	320	-82.66%
Total rye - acres	334	594	77.84%
Flaxseed - acres	1,295	4,342	235.29%
Vegetables - acres (excluding greenhouses)	n/a	11	n/a
Total greenhouse area in use - square feet	n/a	23,260	n/a

\*Source: Statistics Canada Census of Agriculture, and community information for the County of Vermilion River.  
Figures are based on number of farms reporting.  
n/a - not available from Statistics Canada Census data



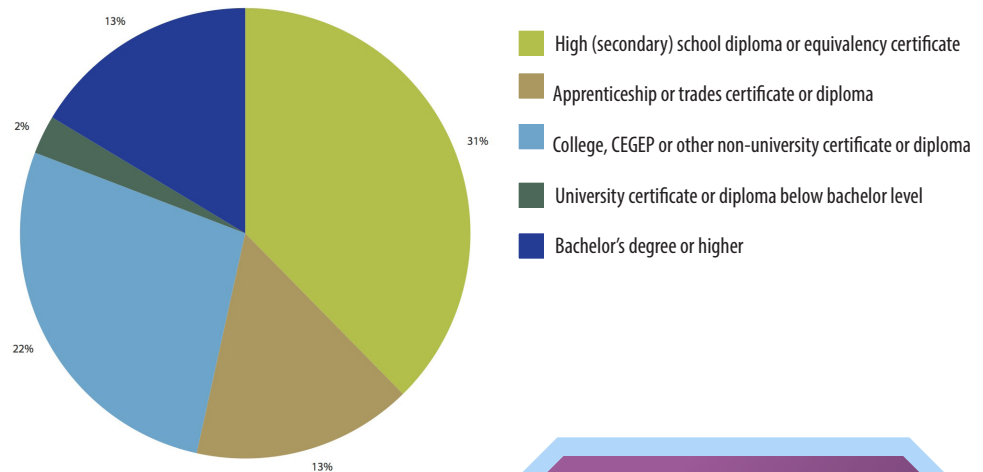


# Education

The County of Vermilion River Region has an educated and motivated labour force. The County is home to one of two Lakeland College campuses in the Town of Vermilion with the other located an hour away in the City of Lloydminster.

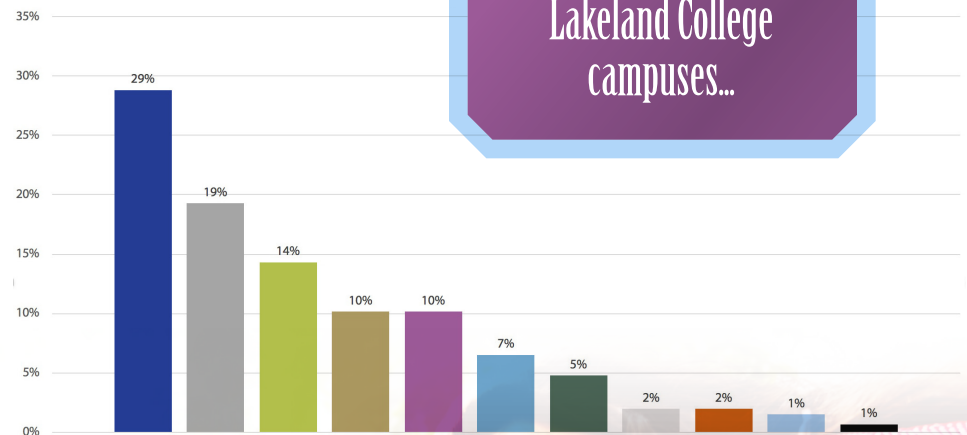
People with  
post-secondary  
certificate, diploma  
or degree  
**5,425**

## Educational Attainment



- Architecture, engineering, and related trades
- Business, management and public administration
- Health and related fields
- Education
- Agriculture, natural resources and conservation
- Personal, protective and transportation services
- Social and behavioural sciences and law
- Humanities
- Physical and life sciences and technologies
- Mathematics, computer and information sciences
- Visual and performing arts, and communications technologies

## Major Field Study



The County is  
home to one of two  
Lakeland College  
campuses...





# Lakeland College



At Lakeland College, students take charge of their future and become leaders today through career-relevant, industry-driven programming and experiential learning opportunities. Graduates continue to fuel the workforce of tomorrow within the County of Vermilion River.

## Applied Research

The College is committed to pursuing applied research and innovation opportunities that enhance both teaching and learning and support regional economic development.

### PROGRAMS:

[Agricultural Sciences](#)

[Business](#)

[Continuing Education](#)

[Dual Credit Courses](#)

[Energy](#)

[Environmental Sciences](#)

[Fire and Emergency Services](#)

[Foundational Learning](#)

[Health and Wellness](#)

[Human Services](#)

[Inclusive Education](#)

[Interior Design](#)

[Microcredentials](#)

[Pesticides Certification Program](#)

[Trades - Apprenticeship](#)

[Trades - Pre-employment](#)

[University Transfer](#)

### APPLIED RESEARCH FOCUS AREAS:

#### Agriculture, Energy and Environment

Our Research Centre and G.N. Sweet Livestock Research Facility at the Vermilion campus are testbeds for innovations in integrated renewable energy systems, bioenergy, livestock research and crop research.



### DID YOU KNOW?

**One of the largest** student managed farms in Canada is located at the Vermilion campus.

There are over **20 approved crop-research projects** underway in college-run fields.

The **County Energy Park Lab** in Lloydminster, originally developed for the Street Rod Technologies program, is now home to **vehicle restoration** workshops.

**Lakeland College** offers **50+ programs** at its campuses in Vermilion and Lloydminster, and through online and off-site programs and courses.





# Household Income

Average  
Individual  
Income  
(County)

**\$60,250**

Average  
Household  
Income  
(County)

**\$120,000**



## Housing across the Region

### HOUSING TYPES

Single-detached house	<b>4,595</b>
Semi-detached house	<b>25</b>
Row house	<b>85</b>
Apartment	<b>220</b>
Movable dwelling	<b>335</b>
Owned:	<b>4,495</b>
Rented:	<b>770</b>
Residential Subdivisions (County):	<b>18</b>

**Number of Homes: 5,260**

## Utilities

### Telephone

(Landline/Cellular Service)

### Internet

(High Speed Wireless, Fibre)

Carriers:

- CCI
- Bellevista Broadband
- MCSNet
- XploreX
- Bell
- Primus

### Electricity

(3 phase power in most areas)

- Direct Energy
- ATCO Energy

### Natural Gas

- County of Vermilion
- Natural Gas Utility
- ATCO Gas
- Minco Gas

### Water / Wastewater

- ACE Regional Water System
- Blackfoot Water Utility
- Clandonald Water Utility
- Islay Water Utility
- McLaughlin Water Utility
- River Course Municipal Water
- Dewberry Municipal Water/Wastewater

# Taxes

Alberta has some of the lowest taxes in North America — with no provincial sales tax, no payroll tax, no health care premiums, and some of the lowest corporate income taxes in Canada.

Low fuel taxes and low personal income tax rates make Alberta one of the most cost competitive jurisdictions in the country.

## PROVINCIAL TAX RATES (2020)

### Corporate Income Tax:

General Rate	<b>8%</b>
Manufacturing and Processing Rate	<b>N/A</b>
Small Business Rate	<b>2%</b>
Threshold	<b>\$500,000</b>

## County of Vermilion River Mill Rates (2022)\*



\*Mill rates depend on location within the County. Multiple mill rates may apply for properties with more than one use.



# Awards

Recipient of the  
**Emerald Award  
for Climate Change**  
for the County Natural Gas  
service and being the largest  
rural gas service by volume  
in Alberta.

Recipient of the  
**Provincial Ministers  
Innovation Award**  
for the Alternative Land  
Use Services Program







CONTACT:

Economic Development Officer

**780-846-2244**

[Economicdevelopment@county24.com](mailto:Economicdevelopment@county24.com)

[www.vermilion-river.com](http://www.vermilion-river.com)

January 2, 2024

County of Minburn  
PO box 550  
4909 50 Street  
Vegreville, AB T9C1R6

Attention: Reeve and Council

RE: Town of Vegreville Family Day Pancake Breakfast

Dear Reeve Konieczny and Councillors,

On Family Day, February 19, 2024, the Town of Vegreville Mayor and Councilors will be hosting a Pancake Breakfast at the Social Centre for the members of the community. The Pancake Breakfast in 2023 served 476 people and was a great success. We thank the County Council for their voluntary participation and monetary contribution last year.

Town Council would like to extend the invitation to the County of Minburn to participate again this year. If interested, please reply with the level of participation, (volunteer, monetary, etc.), by February 1, 2024 so the arrangements for this event can begin.

Thank you for your past contributions and we look forward to working together with Minburn County Reeve and Council to make the 2024 Family Day breakfast another successful event for our local community.

Sincerely,



Tim MacPhee  
Mayor

TM/sc



**COMMITTEE OF THE WHOLE  
DIVISION REPORT**

**Name:** \_\_\_\_\_

**Division:** \_\_\_\_\_

**For Presentation at** \_\_\_\_\_ **Committee of the Whole Meeting**

**From Date:** \_\_\_\_\_

**To Date:** \_\_\_\_\_

**Resident Concerns:**



**COMMITTEE OF THE WHOLE  
DIVISION REPORT**

**Name:** \_\_\_\_\_

**Division:** \_\_\_\_\_

**For Presentation at** \_\_\_\_\_ **Committee of the Whole Meeting**

**From Date:** \_\_\_\_\_

**To Date:** \_\_\_\_\_

**Resident Concerns:**



**COMMITTEE OF THE WHOLE  
DIVISION REPORT**

**Name:** \_\_\_\_\_

**Division:** \_\_\_\_\_

**For Presentation at** \_\_\_\_\_ **Committee of the Whole Meeting**

**From Date:** \_\_\_\_\_

**To Date:** \_\_\_\_\_

**Resident Concerns:**